

PROCTOR LAKE

Three Rivers Region

2180 FM 2861
Comanche, TX 76442
(254) 879-2424

Emergency : Call 911
Comanche County
Sheriff: (325) 356-7533

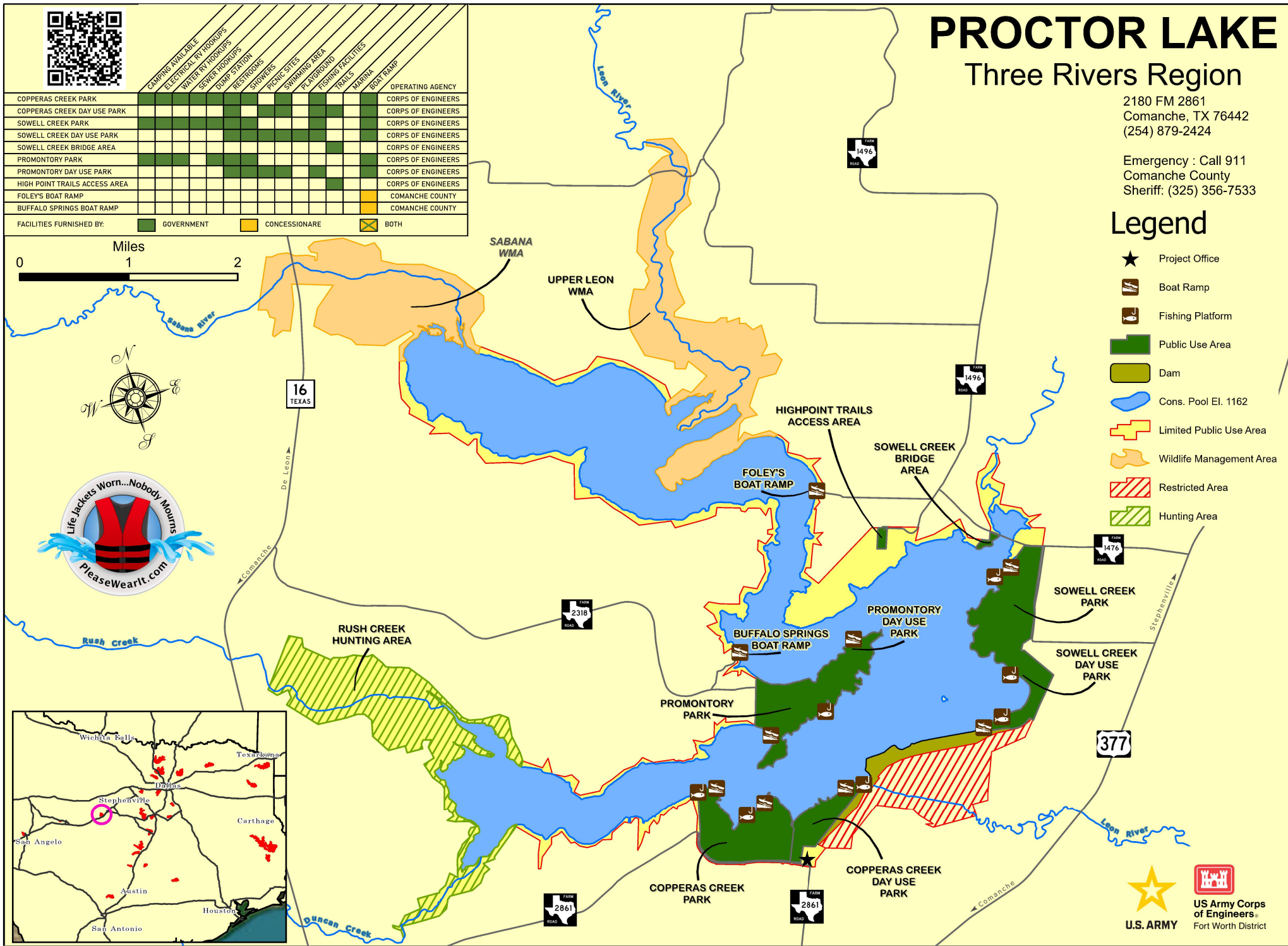
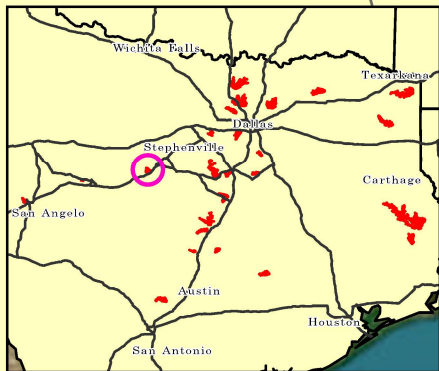
Legend

- Project Office
- Boat Ramp
- Fishing Platform
- Public Use Area
- Dam
- Cons. Pool El. 1162
- Limited Public Use Area
- Wildlife Management Area
- Restricted Area
- Hunting Area



	CAMPING AVAILABLE	ELECTRICAL RV HOOKUPS	WATER RV HOOKUPS	SEWER HOOKUPS	DUMP STATION	RESTROOMS	SHOWERS	PICNIC SITES	SWIMMING AREA	PLAYGROUND	FISHING FACILITIES	TRAILS	MARINA	BOAT RAMP	OPERATING AGENCY
COPPERAS CREEK PARK															CORPS OF ENGINEERS
COPPERAS CREEK DAY USE PARK															CORPS OF ENGINEERS
SOWELL CREEK PARK															CORPS OF ENGINEERS
SOWELL CREEK DAY USE PARK															CORPS OF ENGINEERS
SOWELL CREEK BRIDGE AREA															CORPS OF ENGINEERS
PROMONTORY PARK															CORPS OF ENGINEERS
PROMONTORY DAY USE PARK															CORPS OF ENGINEERS
HIGH POINT TRAILS ACCESS AREA															CORPS OF ENGINEERS
FOLEY'S BOAT RAMP															COMANCHE COUNTY
BUFFALO SPRINGS BOAT RAMP															COMANCHE COUNTY

FACILITIES FURNISHED BY: ■ GOVERNMENT ■ CONCESSIONARE ■ BOTH



The U. S. Army Corps of Engineers has provided these spatial data as a representation of the various geographic information gathered from multiple sources. These data should be viewed only as a representation of the provided information and should not be used for any other purpose. No guarantee is made by the U. S. Army Corps of Engineers regarding the accuracy or completeness of the data or their suitability for a particular use. November 2023